

## BELZONA PROTECTS CHIP CYCLONE WELD SEAMS

### CUSTOMER

Pulp & Paper Mill in North Carolina, U.S.A.

### APPLICATION DATE

September 1991

### APPLICATION SITUATION

Chip cyclone used to remove oversized chips, pin chips, fines, bark, burnt wood, rotten wood, dirt and foreign materials.

### PROBLEM

The chip cyclone suffers from continuous erosion, and the irregularities and/or protrusions of the weld seams were attacked.

### PRODUCTS

Belzona® 1321 (Ceramic S-Metal)

### SUBSTRATE

Stainless Steel

### APPLICATION METHOD

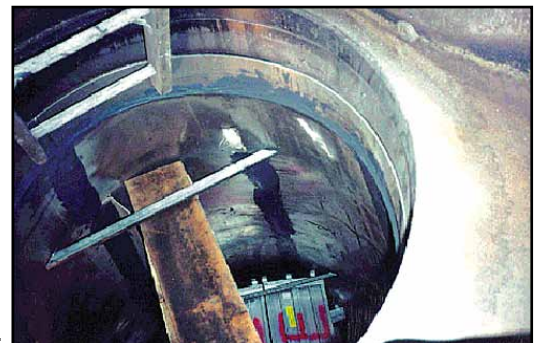
The application was carried out in accordance with a modified Belzona Know-How System Leaflet TCC-1.

### BELZONA FACTS

The Belzona® 1321 protected the weld seams for over 2 years, before a new unit arrived to replace the old chip cyclone.

### PICTURES

1. Conical shaped chip cyclone.
2. Eroded weld seams of the chip cyclone.
3. Belzona® 1321 being used to protect weld seams from future erosion.



For more examples of *Belzona Know-How In Action*, please visit <http://khia.belzona.com>



Belzona products are manufactured under an ISO 9000 Registered Quality Management System.

UK • USA • Canada • China  
[www.belzona.com](http://www.belzona.com)

